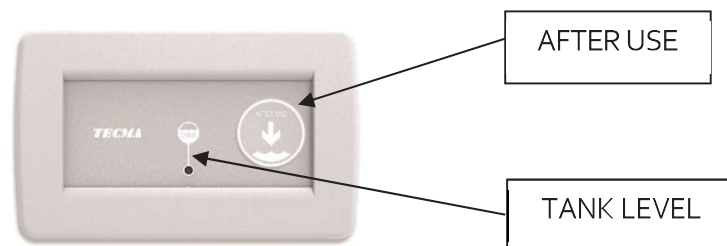


2.0 OPERATING THE SYSTEM

2.1 All-in-one control panel

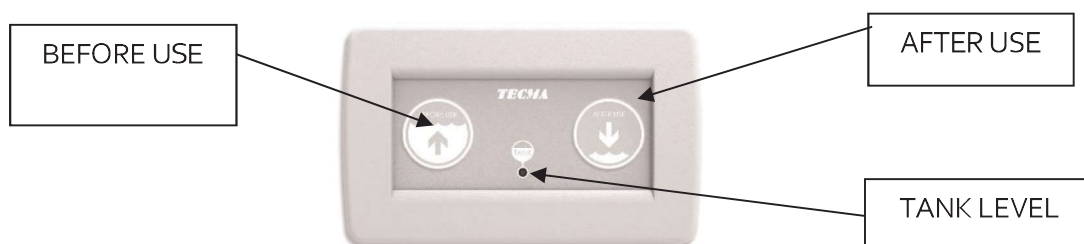
2.1.1 One button

Press the "AFTER USE" button to start the automatic flush cycle, after which the toilet will be refilled with a small amount of water, ready for the next use.



2.1.2 Two buttons

Press the "BEFORE USE" button before using the toilet. This will fill the toilet with a small amount of water. Press the "AFTER USE" button after using the toilet. This will start the automatic flush cycle, which will empty the toilet.



NOTE: The All-in-one control panel allows you to adjust the amount of water used during the flushing cycle. A regulator placed at the back of the panel increases the amount of water if turned clockwise, or decreases it if turned anticlockwise. The recommended water level is 1 cm above the ceramic outlet.